

# TealLaunch User's Manual



Program Version 3.43  
Last Updated: May 24, 2007

## Table of Contents

<b>Introduction.....</b>	<b>1</b>
<i>Description.....</i>	<i>1</i>
<i>Contents.....</i>	<i>1</i>
<i>Terminology used in the manual.....</i>	<i>1</i>
<i>Installing.....</i>	<i>2</i>
<i>Uninstalling and Updating.....</i>	<i>2</i>
<b>Chapter 1 – Using the Program.....</b>	<b>3</b>
<i>Popup Window.....</i>	<i>3</i>
Applications List.....	4
Action Buttons.....	4
<i>Pushbutton/Stroke Mapping.....</i>	<i>4</i>
<b>Chapter 2 – Configuring Options.....</b>	<b>5</b>
<i>Application List Entries.....</i>	<i>5</i>
Popup Window Buttons.....	6
<i>PushButton/Stroke Mapping.....</i>	<i>8</i>
<i>Trigger Summary.....</i>	<i>9</i>
<i>Actions Summary.....</i>	<i>17</i>
<b>Chapter 3 – Troubleshooting.....</b>	<b>21</b>
<i>Installing and Running.....</i>	<i>21</i>
<i>External Storage Cards (SD/MMC/CF/MS).....</i>	<i>21</i>
<i>Compatibility.....</i>	<i>21</i>
<b>APPENDIX A – Revision History.....</b>	<b>22</b>
<b>APPENDIX B – Contact Info.....</b>	<b>23</b>
<b>APPENDIX C – Registering.....</b>	<b>23</b>
<b>APPENDIX D – Products.....</b>	<b>24</b>
<b>APPENDIX E – Legal Notice.....</b>	<b>26</b>
<i>Disclaimer.....</i>	<i>26</i>

# Introduction

## *Description*



Thank you for trying TealLaunch. This system extension gives you instant and easy access to a wide range of useful system and editing functions, desk accessories, and your frequently used applications. You can access the functionality through a fully configurable popup window, or wire up to 200 dozen instant functions to taps on the Palm silkscreen buttons, pen strokes, or hardware button presses combinations.

## *Contents*

This archive contains the following files:

### Program files:

TEALLNCH.PRC	The TealLaunch program file
TEALMSTR.PRC	The TealMaster System Extensions Manager (trial)
TPSETUP.EXE	Optional Windows easy-installer

### Document files:

LNCHDOC.PDF	This document in Adobe Acrobat (PDF) format
LNCHDOC.HTM	This document in HTML format (sans images)
LNCHDOC.PRC	This document in Palm document (TealDoc) format
REGISTER.HTM	TealPoint Registration form in HTML format
REGISTER.TXT	TealPoint Registration form in text format

## *Terminology used in the manual*

This manual uses the term 'button' to describe tappable rounded rectangular areas on the Palm display screen. 'Hardware buttons' refer to the four standard application buttons at the bottom of the organizer, the up and down buttons, power button, and contrast button on the Palm V or Palm IIIc. Lastly, 'silkscreen buttons' refer to the four round tappable areas printed below the Palm display screen on either side of the Graffiti writing area.

## ***Installing***

### **Windows:**

Run SETUP.EXE, our easy installer program, follow the on screen prompts, and HotSync afterwards to complete the installation.

### **Other platforms:**



Use the Palm Install Tool (Quick Installer) that comes in the Palm Desktop to install the program file **TEALLNCH.PRC**. Also install **TEALMSTR.PRC** if you do not already have it or another extensions manager on your organizer.

The Palm Install Tool comes installed on your desktop computer as part of your original software package, and is accessible from the Palm Desktop program as an icon on the left hand side. Instructions on how to use the Palm Install Tool are in the Handbook that came with your Pilot, PalmPilot, or WorkPad.

This document also comes as a Palm document file **LNCHDOC.PRC**, which you can install and view with our program TealDoc.

### **Hacks and system extensions managers**

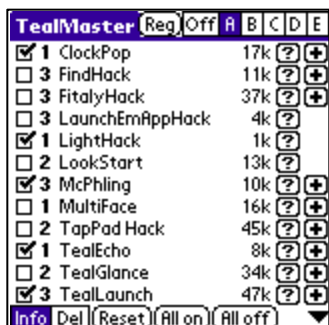
On your handheld, TealLaunch will not appear by itself in the Launcher applications screen, but only inside your system extensions manager.

TealLaunch uses the Hackmaster-compatible Palm System Extensions standard. This is a safe and standard way to add and manage extended system functionality under PalmOS. We've included the non-expiring trial version of our own extensions manager TealMaster, but you may use Hackmaster (shareware) or X-Master (freeware) as well on devices running PalmOS 4 or earlier. On newer devices running PalmOS 5, you **MUST use TealMaster**, as no other system extensions manager except TealMaster are currently compatible with the new devices.

## ***Uninstalling and Updating***

Before updating or deleting a previous version of any TealMaster/Hackmaster system extension like TealLaunch, **you must to disable** the extension first in the TealMaster/Hackmaster control screen. Otherwise, the install will fail, and the handheld might crash after or during hotsync.

# Chapter 1 – Using the Program



To start TealLaunch, run the TealMaster/Hackmaster application and check the checkbox next to TealLaunch in the list of system extensions. In TealMaster, if running for the first time, be sure to activate an active profile slot by first tapping on one of the letters in the upper right hand corner.

By default, TealLaunch is configured to pop up its launcher window when one of the following actions occurs:

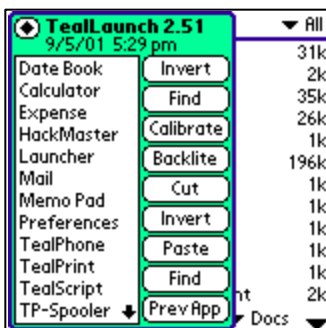
- The pen is tapped on the silk-screened Calc/Favorites button (for devices with Graffiti writing areas)
- The voice recorder button is pressed (on Tungsten/Treo handhelds)
- The hardware contrast button is pressed (on PalmV handhelds)

These settings are fully configurable and changeable to match your own preferences. You can remove these mappings or map the popup window to other button presses, pen swipes, or combinations to suit your needs and device model.

On a Palm V, if the contrast button is pressed and held briefly before releasing, the normal contrast control will come up instead.

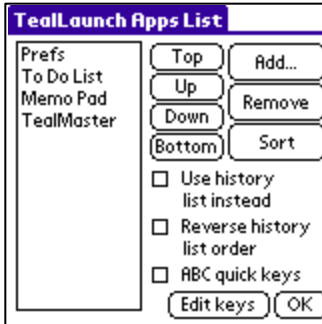
You'll no doubt want to heavily customize the program listings and key assignments for TealLaunch, but first here's an overview of the program and its screens.

## Popup Window



The TealLaunch Popup Window contains programmable buttons for useful functions and a customizable list of apps for quick access. Note that if TealLaunch is not yet registered, the registration reminder covers up some of the space that is normally available for apps in the list.

## Applications List



The applications list can either display a pre-configured static list of applications, or (alternatively) a list of the last twelve applications visited. You can scroll through the list of apps using the page-up and page-down hardware scrolling buttons, or using graffiti to enter the first letter of the app you'd like to select. Once an app is selected, you can launch it by pressing the 'Goto' button, if so configured. You can also tap it in the list with the pen or press a hardware or silkscreen button if you have that button configured to execute a 'Goto' command.

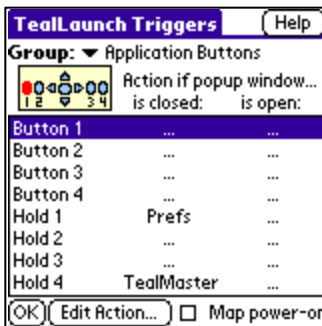
## Action Buttons



The action buttons are optional, and are configurable in the Popup window, and can perform a variety of useful functions, including Cut/Copy/Paste, HotSync, Locking, Keyboard, Goto Previous App, Brightness, Contrast, and more.

## Pushbutton/Stroke Mapping

TealLaunch supports a second "instant" method of launching applications and performing actions. In addition to the popup window, TealLaunch can be configured to launch applications or perform useful functions in response to specific hardware button presses, press-combinations, or pen strokes in the Graffiti writing area. Supported actions include:



### Hardware button presses

Presses of hardware application buttons or device-specific buttons

### Hardware buttons held down

Press-and-hold operations on hardware buttons

### Hardware combos

Combination presses of hardware buttons pressed in sequence

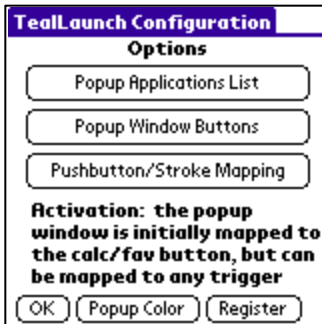
### Silkscreen buttons

Taps on the printed circular areas on the silkscreened writing area

### Silkscreen swipes

Pen swipes between areas on the text writing area

## Chapter 2 – Configuring Options



The TealLaunch configure window can be found inside the application TealMaster or HackMaster. Open it by starting the program and tapping on the '+' (plus) button next to the 'TealLaunch' entry in the list of system extensions.

**Note:** on color devices HackMaster does not currently correctly display the '+' and '?' buttons next to the system extension name, but the button areas are still present and function correctly when tapped. TealMaster, on the other hand, works properly.

The top of the configure window contains three choices for configuring TealLaunch's popup applications list, its popup window buttons, and its instant activation mappings, perhaps the most powerful feature of the program. In addition, a 'Popup Color' button can be tapped to change the background color of the TealLaunch popup window as it appears on color devices from the default green.

### Application List Entries



For a static applications list, you can add, remove, or sort applications and desk accessories from the application list. Use the Add, Remove, Move, or sort buttons to change or modify entries in the list.

**Note:** Apps "run from card" are actually loaded into memory by application launchers into a temporary file. As these apps are automatically deleted from memory when the application is exited, they are no longer available after leaving the app and appear as "(Not in RAM)" in the application history list.

#### Use history list instead

For a dynamic applications list, check the "Use history list instead" option. When set, the list will automatically update itself with the last 12 programs visited. The list will clear itself if the handheld is soft reset.

You can toggle between the dynamic history and static application lists in the TealLaunch popup window by pressing on a "Swap" button. If a button is defined as a "Goto" action, it will appear as "Swap" until you select an application from the list. On a Treo handheld, you can also press the "Alt" button on the phone keyboard to alternate lists.

**(New in 3.38)**

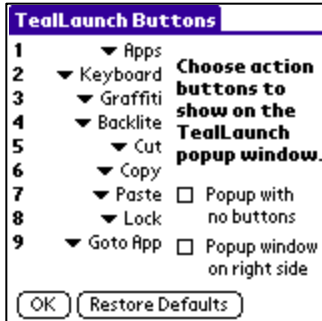
#### Reverse history list order

If selected, shows the history list in reverse order, updated from the bottom up.

### ABC quick keys **(New in 3.31)**

If this option is selected, a “quick key” letter or number is added before each entry in the application list. Entering that letter instantly launches the corresponding application. Select “Edit Keys” to modify the list of letters used (up to 99 chars long), which defaults to the 26 letters of the alphabet followed by single digit numbers. Quick keys can optionally be made case-sensitive by entering both upper and lower case characters in the quick key list.

### Popup Window Buttons



The TealLaunch popup window’s buttons can be configured to execute actions many different useful functions. The buttons can also be turned off entirely with the “Hide all buttons” option to leave a small, streamlined popup window. Supported button functions include:

#### *Goto App / Swap*

Launches the currently-selected app in the app list to the left. Since tapping on a name also launches that app, this button is useful if the selection is changed using the scroll buttons for by entering the first letter of an app by graffiti.

Until an application has been selected, a “Goto” button is used as a “Swap” button, and will alternate the application list between the static list of defined apps and the dynamic list of the last 12 applications visited. **(New in 3.38)**

#### *Cut*

Cuts selected text from an active text field

#### *Copy*

Copies selected text from an active text field

#### *Paste*

Pastes text from the copy buffer into an active text field

#### *Select All*

Selects all text in an active text field

#### *Apps*

Goes to the normal applications launcher. This is the screen that comes up normally if you press the 'apps' silkscreen button.

#### *Keyboard*

Brings up the system QWERTY keyboard if the cursor is active in a text field

#### *Graffiti*

Brings up graffiti help (PalmOS 2.0 or higher only)

### *Backlite*

Toggles on/off the screen backlight (if present)

### *Turn off*

Turns off the PalmPilot

### *Lock*

Locks the organizer and turn it off. If TealLock is present on your Palm, TealLaunch will use it instead.

### *Previous App*

Launches the prior application running before the current was launched

### *Calibrate Pen*

Goes through a pen digitizer-calibration sequence identical to the one in the Prefs app.

### *Local Sync*

Launches the HotSync application and start an local HotSync operation

### *Modem Sync*

Launches the HotSync application and start an modem HotSync operation

### *TealNote*

Inserts a new TealNote at the current cursor location (requires TealNotes)

### *TealGlance*

Calls TealGlance (if present) to show its popup reminder window.

### *Grab TealPaint Screen*

Performs a screen-grab of the current display into the current TealPaint image database. This action supplements the standard *TealPaint* timed screen grab. Requires *TealPaint*.

### *Invert*

Inverts the colors of the display on a Palm V, switching black with white.

### *Find*

Performs a global find, doing what the find button normally would do.

### *Set BMark xx*

Saves the name of the current application in one of eight bookmark slots for later retrieval by the “go to bookmark” command. The Bookmark function is very handy, because it allows you to change button mappings without going to TealLaunch’s settings. For instance, by setting the four app buttons to four “Go to Bookmark” actions and the same buttons held down to the “Set Bookmark” actions, one could re-map any of the four buttons to the current application at any time by simply pressing and holding down the button to map.

### *Goto BMark xx*

Launches the application saved in one of eight bookmark slots.

### *Brightness*

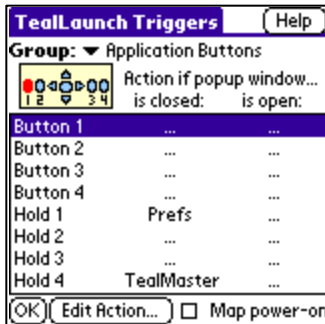
Brings up the system software brightness adjustment on applicable devices.

### *Contrast*

Brings up the system software contrast adjustment on applicable devices.



## PushButton/Stroke Mapping



TealLaunch can be configured to execute actions based on a multitude of button presses and pen swipes, grouped into categories on the TealLaunch trigger screen.

By default, buttons used to turn on the device are not mapped. You can map them with the “Map power-on” option. Note that due to PalmOS system quirks mapping them can keep the device from turning on reliably on certain devices like the Tungsten E2.

### Standard Triggers

Supported triggers include presses of any of the four application hardware buttons, four silkscreen buttons (on devices with Graffiti writing areas), device-specific auxiliary buttons, pen strokes between any two silkscreened buttons or pen strokes from a silkscreen button to the graffiti area. This last option may not be supported on some devices with virtual silkscreen writing areas if silkscreen strokes are mapped to other functions.

### Chorded triggers

In addition, combination presses are also supported between two application buttons or an application button with the page-up or page-down buttons or Palm 5-way navigation buttons. In these “combo” presses, a second button is pressed while the first is still being held down. This click-click combination creates a separate trigger that can have a separate function from either of the two buttons alone. When using a chorded trigger, always press the application button first, and follow it a split-second later with a press of the arrow button, while still holding down the application button.

### Open window triggers

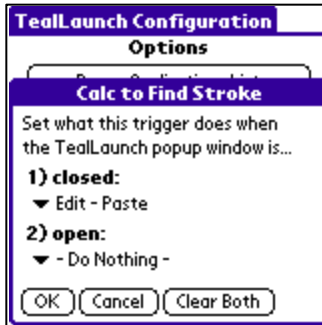
All “triggers” can be configured to execute different actions depending on whether the TealLaunch Popup Window is **open** or **closed**, giving you additional independent mappings based on a two-trigger combination: one to open the window, and another to issue the command.

### Held triggers

Wait, there's more. Any of the hardware buttons can also be configured to execute different actions depending on whether they are pressed and released quickly or pressed and **held** for more than a half-second before release. This includes double-button combinations. Just press them and you'll hear a click. If you hold it down, it will click a second time after a half-second pause, indicating that the optional 'button-hold' trigger has been detected.

In total, all these choices give up to 200 separate independently configurable action triggers that can be mapped to a variety of functions.

## Setting trigger actions



To change the function of a trigger, select it from the trigger list and tap on the **Edit Action** button. You'll see a window with two popup lists that allow you to change the functionality of that trigger for two cases: when the popup window has not been opened (closed) and when it is already up (open). Note that you need to make sure that somewhere you've left a way to reach the system applications launcher, either through the *TealLaunch* popup, or a mapping to a button or button combo so you can still access all your apps you haven't remapped. A full list of supported triggers and actions appears below:

## Trigger Summary

### Application Buttons



#### Button 1

A quick press of the first hardware button (typically labeled 'Datebook', but is used as a phone button on Treo smartphones)

#### Button 2

A quick press of the second hardware button (typically labeled 'Address')

#### Button 3

A quick press of the third hardware button (typically labeled 'ToDo')

#### Button 4

A quick press of the fourth hardware button (typically labeled 'Memo', but is used as a phone button on Treo smartphones)

#### Hold 1

A long press of the first hardware button

#### Hold 2

A long press of the second hardware button

#### Hold 3

A long press of the third hardware button

#### Hold 4

A long press of the fourth hardware button



On most devices, the four hardware buttons are laid out in order horizontally.



On Treo smart phones, the hardware buttons are laid out in the same order, but the first and last buttons double as phone/power buttons for the device. You can still map actions to "hold" or "combination" triggers using these buttons, but it's best to leave the "standard" actions unmapped versions



The Tungsten T3 has an unusual button layout with four “corner” buttons around the main 5-way control. In clockwise order from the upper-left corner, these correspond to buttons 1, 3, 4, and 2.

### 5-way Navigator Buttons

*Select Button*

A quick press of the 5-way select button

*Select Hold*

A long press of the 5-way select button

*Left*

A quick press of the 5-way navigation Left button

*Right*

A quick press of the 5-way navigation Right button

*Left Hold*

A long press of the 5-way navigation Left button

*Right Hold*

A long press of the 5-way navigation Right button

### Button/Button Combos



Combinations activated by pressing of two application buttons

*Combo 1+2*

Datebook+Address combo

*Combo 1+3*

Datebook+ToDo combo

*Combo 1+4*

Datebook+Memo combo

*Combo 2+3*

Address+ToDo combo

*Combo 2+4*

Address+Memo combo

*Combo 3+4*

ToDo+Memo combo

*Hold 1+2*

Held Datebook+Address combo

*Hold 1+3*

Held Datebook+ToDo combo

*Hold 1+4*

Held Datebook+Memo combo

*Hold 2+3*

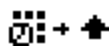
Held Address+ToDo combo

*Hold 2+4*

Held Address+Memo combo

*Hold 3+4*

## Button+5-way Combos



These Combos are activated by pressing an application hardware button, followed by the page-up, page-down, left, or right 5-way buttons while the application button is still being held down.

### *Button 1+Up*

Datebook-PageUp combo

### *Button 2+Up*

Address-PageUp combo

### *Button 3+Up*

ToDo-PageUp combo

### *Button 4+Up*

Memo-PageUp combo

### *Button 1+Down*

Datebook-PageDown combo

### *Button 2+Down*

Address-PageDown combo

### *Button 3+Down*

ToDo-PageDown combo

### *Button 4+Down*

Memo-PageDown combo

### *Hold 1+Up*

Held Datebook-PageUp combo

### *Hold 2+Up*

Held Address-PageUp combo

### *Hold 3+Up*

Held ToDo-PageUp combo

### *Hold 4+Up*

Held Memo-PageUp combo

### *Hold 1+Down*

Held Datebook-PageDown combo

### *Hold 2+Down*

Held Address-PageDown combo

### *Hold 3+Down*

Held ToDo-PageDown combo

### *Hold 4+Down*

Held Memo-PageDown combo

### *Button 1 + Left*

Combination press of the first hardware button with the 5-way nav Left button

### *Button 2 + Left*

Combination press of the second hardware button with the 5-way nav Left button

### *Button 3 + Left*

Combination press of the third hardware button with the 5-way nav Left button

### *Button 4 + Left*

Combination press of the fourth hardware button with the 5-way nav Left button

### *Button 1 + Right*

Combination press of the first hardware button with the 5-way nav Right button

*Button2 + Right*

Combination press of the second hardware button with the 5-way nav Right button

*Button3 + Right*

Combination press of the third hardware button with the 5-way nav Right button

*Button3 + Right*

Combination press of the fourth hardware button with the 5-way nav Left button

*Hold1 + Left*

Combination long press of the first hardware button with the 5-way nav Left button

*Hold2 + Left*

Combination long press of the second hardware button with the 5-way nav Left button

*Hold3 + Left*

Combination long press of the third hardware button with the 5-way nav Left button

*Hold3 + Left*

Combination long press of the fourth hardware button with the 5-way nav Left button

*Hold1 + Right*

Combination long press of the first hardware button with the 5-way nav Right button

*Hold2 + Right*

Combination long press of the second hardware button with the 5-way nav Right button

*Hold3 + Right*

Combination long press of the third hardware button with the 5-way nav Right button

*Hold3 + Right*

Combination long press of the fourth hardware button with the 5-way nav Left button

**Silk-screen Icon Taps**

**Apps**

*Silk A (Home)*

A tap on the Application silk-screen button (also known as “Home”)

*Silk B (Menu)*

A tap on the Menu silkscreen button (“Documents” on the Tungsten T3)

*Silk C (Fav/Calc)*

A tap on the Calculator silk-screen button (“Favorites” on some devices)

*Silk D (Find)*

A tap on the Find silkscreen button (“Photos” on the Tungsten T3)

*Clock*

A tap on Clock silkscreen button (where applicable)

*Contrast*

A tap on Contrast silkscreen button (where applicable)

## Silk-screen Pen Swipes

### Find→Calc

Triggers activated by dragging the pen between two silk-screened buttons

*Apps2Menu (A to B)*

A pen stroke from the Applications to the Menu silk-screened buttons

*Apps2Calc (A to C)*

A pen stroke from the Applications to the Calculator/Favorites silk-screened buttons

*Apps2Find (A to D)*

A pen stroke from the Applications to the Find silk-screened buttons

*Menu2Apps (B to A)*

A pen stroke from the Menu to the Applications silk-screened buttons

*Menu2Calc (B to C)*

A pen stroke from the Menu to the Calculator silk-screened buttons

*Menu2Find (B to D)*

A pen stroke from the Menu to the Find silk-screened buttons

*Calc2Apps (C to A)*

A pen stroke from the Calculator to the Applications silk-screened buttons

*Calc2Menu (C to B)*

A pen stroke from the Calculator to the Menu silk-screened buttons

*Calc2Find (C to D)*

A pen stroke from the Calculator to the Find silk-screened buttons

*Find2Apps (D to A)*

A pen stroke from the Find to the Applications silk-screened buttons

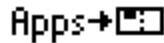
*Find2Menu (D to B)*

A pen stroke from the Find to the Menu silk-screened buttons

*Find2Calc (D to C)*

A pen stroke from the Find to the Calculator silk-screened buttons

## Button-to-graffiti Pen Swipes



Triggers activated by dragging the pen from a silk-screened button to the graffiti-writing area, which is divided into four quadrants: Upper-Alpha, Lower Alpha, Upper-Number, and Lower-Number. These swipes are not supported on devices with the PalmOS 5.3 Pen Input Manager, such as the Tungsten T3.

### *Apps2UAlph (A to 1)*

A pen stroke from the Applications button to the top left quadrant of the graffiti area

### *Apps2LAlph (A to 2)*

A pen stroke from the Applications button to the bottom left quadrant of the graffiti area

### *Apps2UNum (A to 3)*

A pen stroke from the Applications button to the top right quadrant of the graffiti area

### *Apps2LNum (A to 4)*

A pen stroke from the Applications button to the bottom right quadrant of the graffiti area

### *Menu2UAlph (B to 1)*

A pen stroke from the Menu button to the top left quadrant of the graffiti area

### *Menu2LAlph (B to 2)*

A pen stroke from the Menu button to the bottom left quadrant of the graffiti area

### *Menu2UNum (B to 3)*

A pen stroke from the Menu button to the top right quadrant of the graffiti area

### *Menu2LNum (B to 4)*

A pen stroke from the Menu button to the bottom right quadrant of the graffiti area

### *Calc2UAlph (C to 1)*

A pen stroke from the Calculator button to the top left quadrant of the graffiti area

### *Calc2LAlph (C to 2)*

A pen stroke from the Calculator button to the bottom left quadrant of the graffiti area

### *Calc2UNum (C to 3)*

A pen stroke from the Calculator button to the top right quadrant of the graffiti area

### *Calc2LNum (C to 4)*

A pen stroke from the Calculator button to the bottom right quadrant of the graffiti area

### *Find2UAlph (D to 1)*

A pen stroke from the Find button to the top left quadrant of the graffiti area

### *Find2LAlph (D to 2)*

A pen stroke from the Find button to the bottom left quadrant of the graffiti area

### *Find2UNum (D to 3)*

A pen stroke from the Find button to the top right quadrant of the graffiti area

### *Find2LNum (D to 4)*

A pen stroke from the Find button to the bottom right quadrant of the graffiti area

### **CLIE-specific Buttons**

#### *CLIE Jog Dial*

A press of the CLIE jog dial

#### *CLIE Back*

A press of the CLIE “back” button

#### *CLIE Jog Hold*

A long press of the CLIE jog dial

#### *CLIE Back Hold*

A long press of the CLIE “back” button

### **TREO-specific Buttons**

#### *BLUE + Button1*

A press of the first hardware button after being shifted by the blue button

#### *BLUE + Button2*

A press of the second hardware button after being shifted by the blue button

#### *BLUE + Button3*

A press of the third hardware button after being shifted by the blue button

#### *BLUE + Button4*

A press of the fourth hardware button after being shifted by the blue button

#### *Voice/Jog Press*

A quick press of the TREO side button (jog button on older Treos, voice button on newer models)

#### *Menu*

A press of the TREO menu button

#### *Launcher/Home*

A press of the TREO launcher/home button

### **PalmV-specific Triggers**

#### *Hold Cntrst*

A long press of the PalmV hardware (only) contrast button

#### *1+Contrast*

Datebook-Contrast combo

#### *2+Contrast*

Address-Contrast combo

#### *3+Contrast*

ToDo-Contrast combo

#### *4+Contrast*

Memo-Contrast combo

#### *Hold 1+Contrast*

Held Datebook-Contrast combo

#### *Hold 2+Contrast*

Held Address-Contrast combo

#### *Hold 3+Contrast*

Held ToDo-Contrast combo

#### *Hold 4+Contrast*

Held Memo-Contrast combo



## **Zodiac-specific Triggers**

### *Left*

Left move of the analog joystick

### *Right*

Right move of the analog joystick

### *Left Hold*

Held left move of the analog joystick

### *Right Hold*

Held right move of the analog joystick

### *Red Button*

Press of the red button

### *Yellow Button*

Press of the yellow button

### *Hold Red*

Long press of the red button

### *Hold Yellow*

Long press of the yellow button

### *Red + Yellow*

Combination press of red and yellow buttons

### *Hold Red + Yellow*

Long combination press of red and yellow buttons

### *Red + Up*

Combination press of red with analog 'up' action

### *Red + Down*

Combination press of red with analog 'down' action

### *Red + Left*

Combination press of red with analog 'left' action

### *Red + Right*

Combination press of red with analog 'right' action

### *Yellow + Up*

Combination press of yellow with analog 'up' action

### *Yellow + Down*

Combination press of yellow with analog 'down' action

### *Yellow + Left*

Combination press of yellow with analog 'left' action

### *Yellow + Right*

Combination press of yellow with analog 'right' action

### *Hold Red + Up*

Long combination press of red with analog 'up' action

### *Hold Red + Down*

Long combination press of red with analog 'down' action

### *Hold Red + Left*

Long combination press of red with analog 'left' action

### *Hold Red + Right*

Long combination press of red with analog 'right' action

### *Hold Yellow + Up*

Long combination press of yellow with analog 'up' action

### *Hold Yellow + Down*

Long combination press of yellow with analog 'down' action

### *Hold Yellow + Left*

Long combination press of yellow with analog 'left' action

### *Hold Yellow + Right*

Long combination press of yellow with analog 'right' action

### **Kyocera 7135-specific Triggers**

#### *OK Button*

A short press of the 'OK' button

#### *OK Hold*

A long press of the 'OK' button

### **Tungsten-specific Buttons**

#### *Record Button*

A quick press of the voice record button

#### *Record Button Held*

A long press of the voice record button

## **Actions Summary**

You set the triggers to implement actions mimicking any of the buttons described above for the Popup Window. You can also set them to:

### **General**

#### *Launch an App...*

Allows you to select an application or desk accessory to instantly launch when this button is pressed.

#### *Open TealLaunch (Closed Only)*

Open the *TealLaunch* window and switch over to the alternate set of *Open* button mappings.

#### *Close TealLaunch (Open Only)*

Close the *TealLaunch* Popup Window.

#### *Go to Apps Launcher*

Goes to the normal applications launcher. This is the screen that comes up normally if you press the 'apps' silkscreen button

#### *Goto Previous App*

Launches the prior application running before the current was launched

#### *Goto Selected App (Open Only)*

Go to the selected application in the popup apps list, if any. Note that the 'Close TealLaunch' is often unnecessary because this action can be used as a 'close' if no apps have been selected by tapping or pressing the hardware scroll buttons.

## **Edit**

### *Cut Text*

Cuts selected text from an active text field

### *Copy Text*

Copies selected text from an active text field

### *Paste Text*

Pastes text from the copy buffer into an active text field

### *Select All Text*

Selects All text if currently in an active text field

### *Undo Text (Closed Only)*

Undo the last change in an active text field. This option is not available in the Popup Window either as a key mapping or from an onscreen button because the Palm OS clears any undo information in an active field when you popup to a new window like the *TealLaunch* Popup Window.

## **Display**

### *Toggle Backlight*

Toggles on/off the screen backlight (if present)

### *Brightness*

Brings up the device-specific brightness control (if present)

### *Contrast*

Brings up the device-specific contrast control (if present)

### *Invert Palm V Display*

Inverts the colors of the display on a Palm V, switching black with white.

### *Calibrate Pen*

Goes through a pen digitizer-calibration sequence identical to the one in the Prefs app.

## **System**

### *Global Find*

Performs a global find, doing what the find button normally would do.

### *Show Graffiti Help*

Brings up graffiti help (PalmOS 2.0 or higher only)

### *Lock and turn off*

Locks the organizer and turn it off. If TealLock is present on your Palm, TealLaunch will use it instead.

### *Turn off*

Turns off the handheld.

*Keyboard*

Brings up the system QWERTY pen-tap keyboard if the cursor is active in a text field

*Clock*

Brings up the system clock, if present.

*Beam*

Simulate a beaming menu command.

*Menu*

Simulate a press of the system "Menu" button.

**Communications**

*Local HotSync*

Launches the HotSync application and start an local HotSync operation

*Modem HotSync*

Launches the HotSync application and start an modem HotSync operation

*Treo Radio On*

Turns on the phone radio on a Treo smart phone

**Applications**

*TealMaster Profile xx*

Switches the current hack profile in TealMaster to the specified profile letter.

*Call TealGlance*

If present, calls TealGlance to bring up the popup reminder window.

*Grab TealPaint Screen*

Performs a screen-grab of the current display into the current TealPaint image database. This action supplements the standard *TealPaint* timed screen grab. Requires *TealPaint*.

*New TealNote*

Inserts a new TealNote at the current cursor location (requires TealNotes)

**Bookmarks**

*Set Bookmark xx*

Saves the name of the current application in one of eight bookmark slots for later retrieval by the "go to bookmark" command. The Bookmark function is very handy, because it allows you to change button remappings without going to TealLaunch's settings. For instance, by setting the four app buttons to four "Go to Bookmark" actions and the same buttons held down to the "Set Bookmark" actions, one could remap any of the four buttons to the current application at any time by simply pressing and holding down the button to map.

*Go to Bookmark xx*

Launches the application saved in one of eight bookmark slots.

## Special

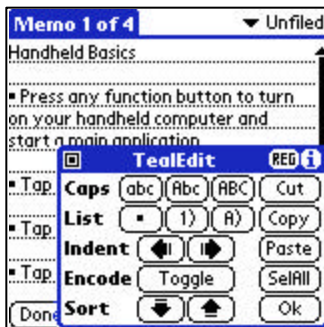
### *Virtual Key Code*

Simulates the press of almost any hardware or silkscreened button by sending the Palm OS key code for a preprogrammed key. When selected, this options allows you to either enter the raw code for the button to simulate (for programmers) or to tap/press on the real key to easily program the code into the unit.

### *Menu Shortcut*

Sends the specified “shash” command shortcut key for a target menu item. For instance, ‘/C’ can be sent to issue a copy command for any program which supports the standard PalmOS shortcut for copy.

## Desk Accessories



Desk Accessories are a special standard for small mini applications that you can run at any time. Unlike normal full-size applications, desk accessories are designed to pop-up over your current application. They are not found by the standard application launchers, but must be launched with a special popup Launcher that supports them, like TealLaunch. The TealTools Utilities Pack is a collection of Desk Accessories usable with TealLaunch or other DA launcher programs. For more information on the Desk Accessory standard, visit <http://www001.upp.so-net.ne.jp/h-yama/da/>.

## Chapter 3 – Troubleshooting

### ***Installing and Running***

If you are having problems getting the program to run, be sure that you have installed both files: TealMaster and TealLaunch. Refer to the manual that came with your device if you are unsure how to do this.

Afterwards, be sure to activate *TealLaunch* by running TealMaster and selecting the checkmark next to TealLaunch. If it still does not work try unselecting and reselecting the checkmark. If TealMaster has gotten confused because you either updated or deleted TealLaunch without first deselecting it in TealMaster, perform a soft reset (pinhole reset) to restore the Palm to a normal state.

Lastly, check the TealLaunch options in TealMaster ('+' key) to insure it is set up to activate by your desired choices.

### ***External Storage Cards (SD/MMC/CF/MS)***

Hacks generally have limited access to external storage devices due to the extra overhead involved in accessing them. Because of this, TealLaunch cannot directly launch applications that reside on removable external storage cards.

To launch applications from SD cards using a popup-launcher or button-mapping program like TealLaunch, use our program TealAlias ([www.tealpoint.com/softalia.htm](http://www.tealpoint.com/softalia.htm)) to create RAM-resident placeholder shortcuts for those applications. TealAlias also allows you to categorize the programs or run them from a less conspicuous folder on the storage card.

### ***Compatibility***

As we cannot control the style and robustness of other products, we cannot guarantee compatibility with Palm OS applications beyond those included from Palm Computing. However, we try to resolve compatibility issues as best we can.

TealLaunch, like all system extension, hook into the PalmPilot operating system in a way that may not be compatible with all other programs of this type, often due to the fact that all system extensions run simultaneously and need to share limited system resources and special runtime memory. If you run into this situation, try running with all other hacks, drivers and background applications turned off first to diagnose the problem. Then reactivate them one by one to find the one or ones which conflict.

# APPENDIX A – Revision History

Version 3.43 – May 24, 2007

- Upgraded lock button/actions to supporting locking with TealLock 6
- Fixed application list from overwriting buttons when ABC quickkeys active
- Fixed preselection of previous settings in pushbutton/stroke mapping

Version 3.41 – December 7, 2006

- Fixed support for silkscreen mapping on Tungsten E2
- Fixed listing of silkscreen swipe mappings that were in the wrong category

Version 3.39 – July 11, 2006

- Updated device detection to support Treo 700p

Version 3.38 - May 30, 2006

- Added new Zodiac button-mapping category to simplify mapping on Zodiac's unique button layout  
Added ability to swap between history and apps list in popup window ("Goto" buttons becomes "Swap" if no app is selected)
- Improved button mapping diagram mapping to better reflect Zodiac buttons
- Fixed button+left combo strokes

Version 3.34 – May 8, 2006

- Fixed strokes starting at screen bottom or right from interfering with TealTools launch strokes

Version 3.33 – April 28, 2006

- Added trigger action to turn on phone radio on Treo
- Fixed mapping of Tapwave QuickLaunch buttons

Version 3.32 – April 17, 2006

- Fixed TealLaunch popup window to change selected application when scroll buttons autorepeat

Version 3.31 – March 29, 2006

- Added button mapping trigger for Treo launcher button
- Added button mapping trigger for Treo menu button
- Added option to add alphabetic "quick" keys to instantly launch applications in the app list
- Added option to support mapping of buttons during power-up (don't use on E2 because it prevents system from turning on)
- Improved compatibility with memory-hog desk accessories by boosting stack space allocated for them
- Fixed false activation of graffiti swipes when small window is open
- Fixed mapping of contrast button (was incorrectly tied to favorites C)
- Fixed mapping of select button when popping up window with 5-way hold on older Tungsten handhelds
- Fixed popup from immediately closing if mapped to 5-way selection button on TX or Livedrive
- Fixed support for 5-way navigation in popup window if left and right arrows are not assigned

Version 3.25 – February 28, 2006

- Added support for mapping left-right nav buttons on modern devices (Treo 650, T5, TX, etc)
- Added support for mapping voice button on Treo 650
- Added support for 5-way navigation on config screens
- Added ZLauncher and TealDesktop to list of known launchers (so they don't appear in history lists)
- Added diagrams to clarify button mapping screen
- Improved 5-way nav functionality in popup window

- Improved interface for Button Mapping Config screen, using clearer categories
- Improved interface for Application List Config screen, allowing easier sorting of entries
- Improved key handling to ignore button presses that turn on the device (to prevent interference)
- Fixed hardware button activation on Tungsten E2
- Fixed support for mapping 5-way select button on Treo 650
- Fixed support turning on/off Treo 650 phone via long hardware button press (as long as equivalent "hold" operation is not mapped to another action in TealLaunch)

Version 3.16 – September 8, 2003

- Added support for landscape modes on TungstenT3 and Sony UX50
- Improved history list to instantly reflect previous application when returning to launcher
- Updated silkscreen icon images in config screens to reflect new devices with alternate images
- Fixed interaction with Find command and third party Daynotes application

## APPENDIX B – Contact Info

TealLaunch by TealPoint Software  
©1999-2007 All Rights Reserved.

TealPoint Software  
454 Las Gallinas Ave Suite #318  
San Rafael, CA 94903-3618  
We look forward to hearing from you.

Please visit us at [www.tealpoint.com](http://www.tealpoint.com), or email us at [contact@tealpoint.com](mailto:contact@tealpoint.com).

## APPENDIX C – Registering

Registering allows you to use the program past the 30 day expiration period and turns off registration reminders.

Currently, you may register by snail mail or online with a credit card and a secured server from the store where you downloaded the software. For the first option, send the following information on a sheet of paper separate from your payment.

- Product Name
- E-Mail Address
- HotSync User ID (Pilot Name Required for Passkey generation. It can be found on the main screen of the HotSync application on the Pilot as "Welcome \_\_\_\_\_" or in the corner on a PalmIII or higher)
- Check (drawn off a US Bank) or Money Order for (\$14.95 US). No international checks or money orders please.



## APPENDIX D – Products

Visit us online for our complete product line, including:

**SHORTCIRCUIT ( <http://www.tealpoint.com/softshrt.htm> )**

A new twist on gameplay fused from your all time action puzzle favorite games, connect falling conduit pieces into explosive loops in this frantic race against the clock.

**SUDOKUADDICT ( <http://www.tealpoint.com/softsudo.htm> )**

Sudoku Addict brings to your handheld the addictive worldwide puzzle craze that has displaced crossword puzzles in many newspapers in Great Britain and Japan.

**TEALAGENT ( <http://www.tealpoint.com/softagnt.htm> )**

Get news, movie times, stock quotes, driving directions, web pages and more without need for a wireless connection. TealAgent fetches and formats web-based content for offline viewing.

**TEALALIAS ( <http://www.tealpoint.com/softalia.htm> )**

Free up memory and make the most of external expansion cards. Placeholder 'Alias' shortcut files automatically find, load, and launch apps and data from external SD cards, increasing free main memory.

**TEALAUTO ( <http://www.tealpoint.com/softauto.htm> )**

Track and graph automobile mileage, service, and expenses with TealAuto, the complete log book for your car or any vehicle. Extensive customization options and unmatched in features and functionality.

**TEALBACKUP ( <http://www.tealpoint.com/softback.htm> )**

Backup your valuable data with TealBackup, supporting manual and automatic backups to SD/MMC/CF cards and Memory Stick, backups through HotSync, and optional compression and encryption.

**TEALDESKTOP ( <http://www.tealpoint.com/softdesk.htm> )**

Launch applications with TealDesktop, the themed replacement for the standard system launcher screen with tabs, multiple card folders, drag and drop, and more

**TEALDOC ( <http://www.tealpoint.com/softdoc.htm> )**

Read, edit, and browse documents, Doc files, eBooks and text files with TealDoc, the enhanced doc reader. Extensive display and customization options; TealDoc is unmatched in features and usability.

**TEALECHO ( <http://www.tealpoint.com/softecho.htm> )**

Improve your Graffiti text input speed and accuracy, seeing what you write with TealEcho digital "ink". No more writing blind!

**TEALGLANCE ( <http://www.tealpoint.com/softglnc.htm> )**

See the time, date, upcoming appointments and todo items at power-up with TealGlance. The TealGlance pop-up utility comes up when you power up your handheld letting you see your day "at a glance."

**TEALINFO ( <http://www.tealpoint.com/softinfo.htm> )**

Lookup postal rates, area codes, tip tables, schedules, airports, and info from hundreds of free TealInfo databases. Create you own mini-apps; a handheld reference library.

**TEALLAUNCH ( <http://www.tealpoint.com/softlnch.htm> )**

Launch applications instantly with the TealLaunch pop-up launcher and button/stroke-mapping utility. Map applications to button presses and pen swipes so you can get to your apps quickly.

**TEALLOCK ( <http://www.tealpoint.com/softlock.htm> )**

Secure and protect your handheld with TealLock, the automatic locking program with encryption and card support. TealLock has unmatched features and customization options for personal or corporate use.

**TEALMAGNIFY ( <http://www.tealpoint.com/softlens.htm> )**

Save your eyesight with TealMagnify, an ever-ready magnifying glass that works with most any program. TealMagnify lets you enlarge the screen for those times the text is too small to read.

**TEALMASTER ( <http://www.tealpoint.com/softmstr.htm> )**

Replace Hackmaster with TealMaster, the supercharged 100%-compatible system extensions manager. TealMaster adds enhanced stability, configuration and diagnostic features and PalmOS 5.0 hack emulation.

**TEALMEAL ( <http://www.tealpoint.com/softmeal.htm> )**

Save and recall your favorite restaurants with TealMeal, the personal restaurant database. With TealMeal's handy sorting and selection options, never ask "where to eat" again.

**TEALMEMBRAIN ( <http://www.tealpoint.com/softmemb.htm> )**

Stop crashes and monitor your memory use with TealMemBrain, the application stack stabilizer. TealMemBrain boosts your stack space on OS3 and OS4 handhelds, eliminating the major cause of system instability.

**TEALMOVER ( <http://www.tealpoint.com/softmovr.htm> )**

Beam, delete, rename, and copy files with TealMover, the file management utility for SD/CF/MS cards. TealMover lets you see, move, modify, hex edit, and delete individual files.

**TEALMOVIE ( <http://www.tealpoint.com/softmovi.htm> )**

Play and convert high-quality video and synchronized sound with the TealMovie multimedia system. TealMovie includes a handheld audio/movie player and a Windows AVI/MPEG/Quicktime converter program.

**TEALNOTES ( <http://www.tealpoint.com/softnote.htm> )**

Insert freehand graphics anywhere with TealNotes "sticky notes" for Palm OS. TealNotes can be inserted into memos, to-do lists, address book entries--almost anywhere you currently have editable text.

**TEALPAINT ( <http://www.tealpoint.com/softpnt.htm> )**

Paint, sketch, or draw with TealPaint, the all-in-one graphics paint program for PalmOS. Highlights include 20 tools, 16 patterns, 24 brushes, zoom, hires, layers, multi-undo, and a desktop converter.

**TEALPHONE ( <http://www.tealpoint.com/softphon.htm> )**

Supercharge the address book with TealPhone, the contacts replacement with superior interface and options. Highlights include enhanced display, search, phone-dialing, groups, and linking.

**TEALPRINT ( <http://www.tealpoint.com/softprnt.htm> )**

Print text and graphics to IR, serial, and Windows printers with TealPrint. With numerous connection options, TealPrint, is the all-in-one text and graphic printing solution.

**TEALSAFE ( <http://www.tealpoint.com/softsafe.htm> )**

Store your passwords, credit cards, PIN numbers, and bank accounts in the TealSafe data wallet. With maximum security and encryption, TealSafe is a must for features and security.

**TEALSCRIPT ( <http://www.tealpoint.com/softscrp.htm> )**

Replace or restore Graffiti with TealScript, the text recognition system you can customize. Unlike other systems, you can make or change your own strokes for better speed and accuracy.

**TEALTRACKER ( <http://www.tealpoint.com/softtrac.htm> )**

Track time and expenses with a fast, easy to use interface that requires minimal effort. Generate reports and export data to a spreadsheet. TealTracker is your personal time clock.

**TEALTOOLS ( <http://www.tealpoint.com/softtool.htm> )**

Improve productivity with TealTools pop-up Palm Desk Accessories. TealTools includes a popup calculator, clock/stopwatch, preferences panel, editing panel, memopad, and a file/backup manager.

## **APPENDIX E – Legal Notice**

### ***Disclaimer***

This archive is freely redistributable, provided it is made available only in its complete, unmodified form with no additional files and for noncommercial purposes only. Any other use must have prior written authorization from TealPoint Software.

Unauthorized commercial use includes, but is not limited to:

- A product for sale.
- Accompanying a product for sale.
- Accompanying a magazine, book or other publication for sale.
- Distribution with "Media", "Copying" or other incidental costs.
- Available for download with access or download fees.

This program may be used on a trial basis for 30 days. The program will continue to function afterwards. However, if after this time you wish to continue using it, please register with us for the nominal fee listed in the program. Thank you.

## CUSTOMER LICENSE AGREEMENT

YOU ARE ABOUT TO DOWNLOAD, INSTALL, OPEN OR USE PROPRIETARY SOFTWARE OWNED BY TEALPOINT SOFTWARE, INC. CAREFULLY READ THE TERMS AND CONDITIONS OF THIS END USER LICENSE BEFORE DOING SO, AND CLICK BELOW THAT YOU ACCEPT THESE TERMS.

1. License. You are authorized to use the Software Product owned and developed by TealPoint Software, Inc. on a single hand-held computing device on a trial basis for thirty (30) days. If after 30 days you wish to continue using it, you are required to register with TealPoint and pay the specified fee. This license is not exclusive and may not be transferred. You may make one copy of the Software for back-up and archival purposes only.

2. Ownership. You acknowledge that the Software Product is the exclusive property of TealPoint Software, Inc, which owns all copyright, trade secret, patent and other proprietary rights in the Software Product.

3. Restrictions. You may NOT: (a) decompile or reverse engineer the Software Product; (b) copy (except as provided in 1 above) sell, distribute or commercially exploit the Software product; or (c) transfer, assign or sublicense this license.

4. Disclaimer of Warranty and Liability. TEALPOINT MAKES NO WARRANTY, EXPRESS OR IMPLIED, AS TO THE ACCURACY, COMPLETENESS OR FUNCTIONING OF THE LICENSED SOFTWARE, INCLUDING WITHOUT LIMITATION, WARRANTIES OF MERCHANTABILITY OR OF FITNESS FOR A PARTICULAR PURPOSE, ALL OF WHICH TEALPOINT DISCLAIMS. ALL LIABILITY IS DISCLAIMED AND TEALPOINT ASSUMES NO RESPONSIBILITY OR LIABILITY FOR LOSS OR DAMAGES OF ANY KIND, DIRECT OR INDIRECT, INCIDENTAL, CONSEQUENTIAL OR SPECIAL, ARISING OUT OF YOUR USE OF THE LICENSED SOFTWARE, EVEN IF ADVISED OF THE POSSIBILITY THEREOF.

5. Termination. You may terminate this Agreement at any time by destroying your copy(ies) of the Software Product. The Agreement will also terminate if you do not comply with any of its terms and conditions, at which time you are required to destroy your copy(ies) of the Software Product and cease all use.

6. Applicable Law. This Agreement is governed by the laws of the State of California.

We at TealPoint Software are committed to providing quality, easy-to-use software. However, this product is provided without warranty and the user accepts full responsibility for any damages, consequential or otherwise, resulting from its use.